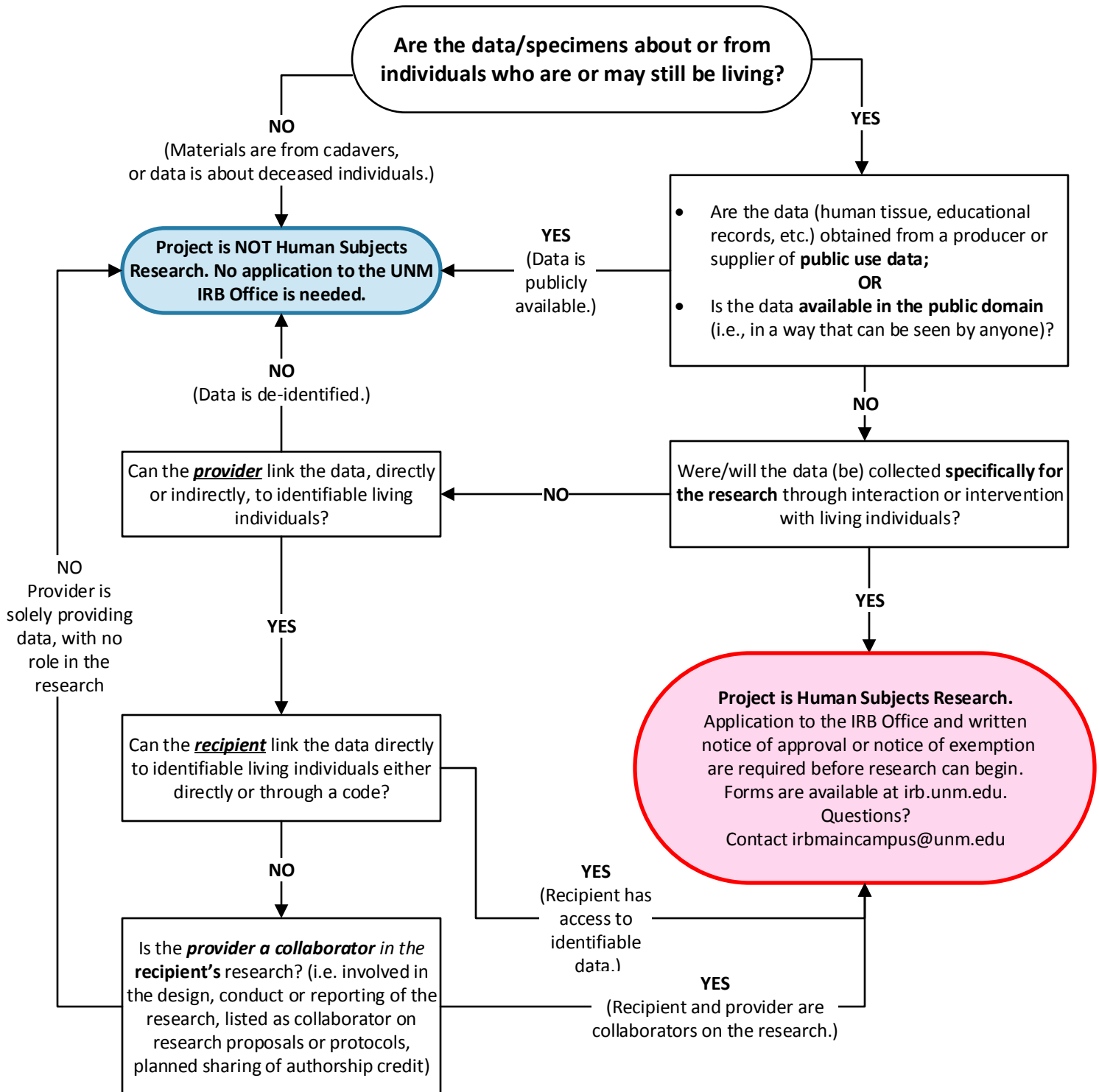


Does Your Research Involving Secondary or Existing Data, Documents, or Biological Specimens Require Review by the UNM IRB?

Decision Tree #2



Reference:
 Research Involving Private Information or Biological Specimens Flowchart", National Institutes of Health (NIH), January 2006, <https://grants.nih.gov/grants/policy/hs/PrivateInfoOrBioSpecimensDecisionChart.pdf>